

TCWPA Battlefield Assessment

# Tazewell

**tennessee  
civil war  
preservation  
association**

## **NARRATIVE**

On January 24, 1864 an attack of Confederate forces advancing on the Big Springs and Bear Creek road was repulsed by the 91<sup>st</sup> Indiana Infantry at Powell's bridge.

## **COUNTY:**

Claiborne

## **HISTORICAL THEMES**

Guerilla Warfare

## **DATE:**

1/24/1864

## **EXPLANATION OF ATTACHMENTS/VIDEO:**

Maps and reports from Official Records

## **GEO COORDINATES:**

## **PRESERVATION**

## **OPPORTUNITY INDEX:**

LOW

## **LINKS FOR FURTHER INFORMATION:**

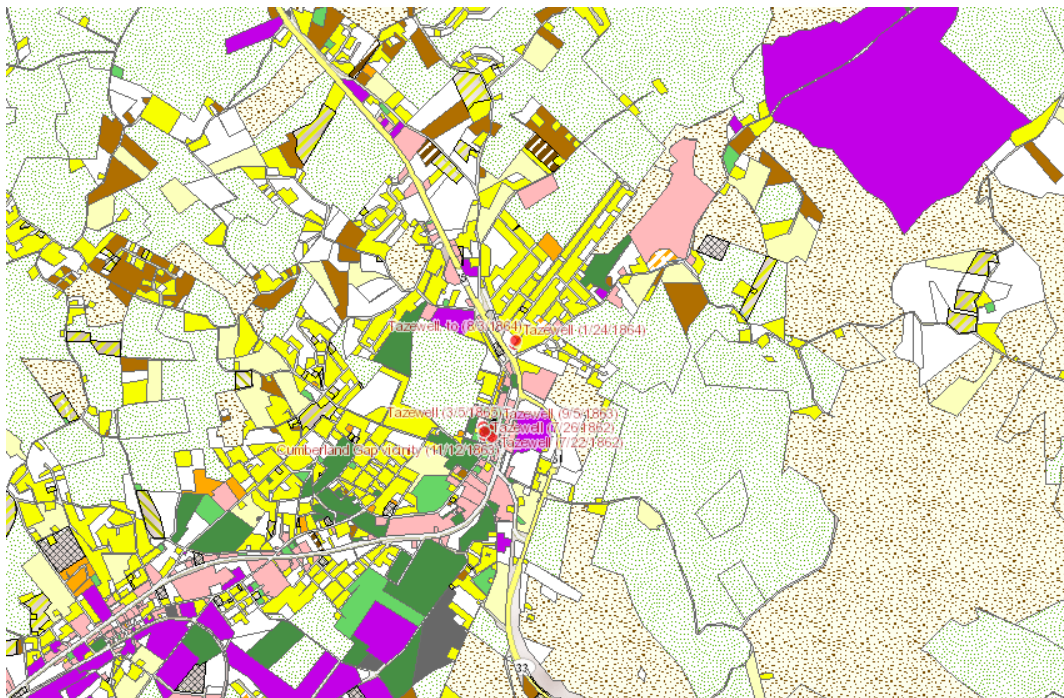
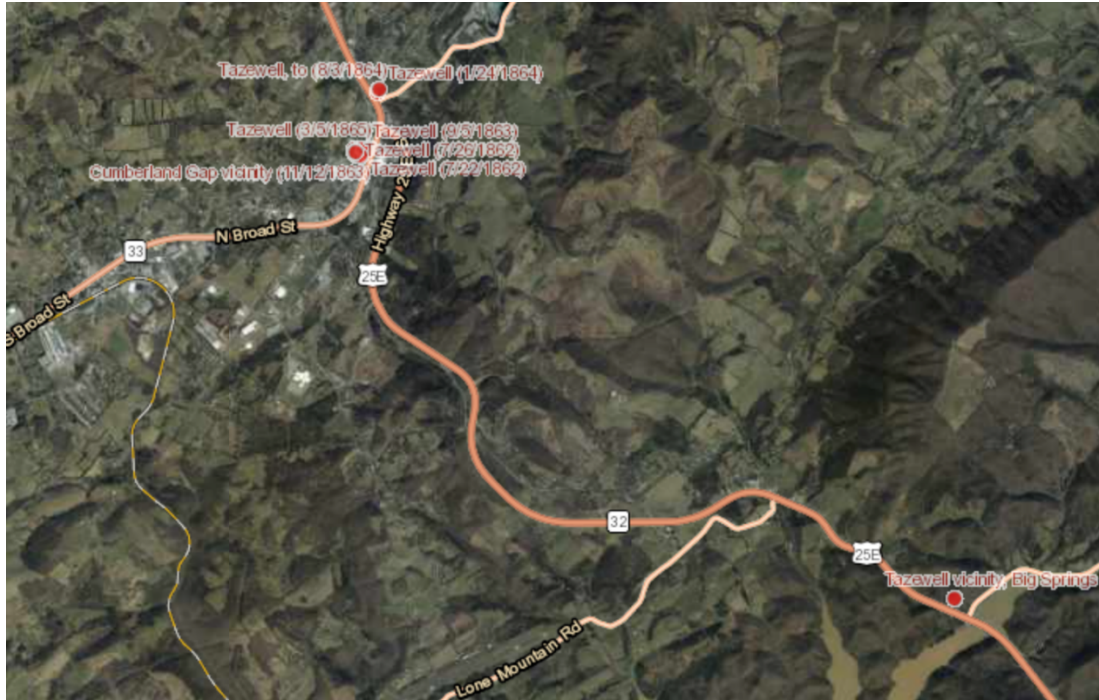
N/A

## **CONFEDERATE UNITS:**

N/A

## **UNION UNITS:**

91<sup>st</sup> Indiana Infantry



January 24, 1864 - Skirmish near Tazewell

JANUARY 24, 1864.-Skirmish at Tazewell, Tenn.

Reports of Brig. Gen. Theophilus T. Garrard, U. S. Army, commanding District of the Clinch.

CUMBERLAND GAP, January 24, 1864. The enemy attacked Tazewell at 3

o'clock this morning. Col. Kise, commanding post Tazewell, telegraphs to me now at 6 a. m.: "The enemy is advancing in large force on the Big Springs and Bear Creek roads, coming from the Clinch." I have sent the Ninety-first Indiana Infantry to Powell's bridge, and ordered Col. Kise to fall back on Powell's bridge if he is satisfied of the enemy being in large force.

T. T. GARRARD, Brig.-Gen.

HDQRS. DISTRICT OF THE CLINCH, Cumberland Gap, Tenn., January 25, 1864.

GEN.: I have the honor to report that on the 24th instant, at 3 a. m., the enemy, 600 strong, attacked our forces at Tazewell. About 100 made a dash upon the town, but were repulsed.

All is quiet now, and from returning scouting [parties] I learn that there is no enemy nearer than within 2 1/2 miles of Jonesville, where a force was found, number not ascertained.

I am, general, very respectfully, your obedient servant,

T. T. GARRARD, Brig.-Gen., Cmdg. District of the Clinch.

OR, Ser. I, Vol. 32, pt. I, p. 127.

#### **LEGEND OF TERMS:**

Historical themes: Topics and subject matter that characterize the battlefield including Control of Tennessee's Resources, Crucible for Leadership, Guerilla Warfare, Transformation in Warfare, Enslaved People, and Influence on Campaign. Sites are identified that exhibit themes at moderate to high levels, and some sites may contain one or more Historical Themes.

Preservation Opportunity Index (POI): A rating assigned for each battlefield to indicate relative opportunity and potential for successful site preservation. The Index is generated by a model that evaluates ratings assigned for site significance, condition, risk of loss, protection potential, and opportunities for interpretation. Based upon the POI values for each region in Tennessee (West, Middle, East), sites are indicated as having High, Medium, or Low opportunity.

Geo Coordinates: General/central location of the battlefield area per latitude and longitude coordinates utilized in Google Earth

#### **DO YOU HAVE INFORMATION ON A BATTLE SITE?**

Please email us at [info@tcwpa.org](mailto:info@tcwpa.org) and we will reach out to you soon. If you have copies of documents or photos to share, you can include those. If you want to discuss by phone, we will schedule that too.

### **HELP US COLLECT INFORMATION TO PRESERVE THESE BATTLEFIELDS**

TCWPA's Statewide Preservation Plan team captains are recruiting volunteers to help gather information about many of the lesser-known sites with hopes of verifying the condition of each site and identifying opportunities for preservation and interpretation.

If you are interested in helping, please contact TCWPA at [info@tcwpa.org](mailto:info@tcwpa.org) .

TCWPA will not publish nor release any confidential information, or the name of the contributor, unless you request to be recognized.

Thank you!



**tcwpa**

**Have Information on a Civil  
War Battlesite?**

Contact our team at [info@tcwpa.org](mailto:info@tcwpa.org)