

Strawberry Plains

**tennessee
civil war
preservation
association**

NARRATIVE

On January 21, 1864 Union scouts with Brig. Gen. James Spears reported that Confederate forces advancing from Blain's Crossroads had crossed the Holston River near Strawberry Plains and formed a mile-long skirmish line. Also see "Dandridge."

HISTORICAL THEMES

Controlling Resources, Crucible for Leadership, Guerilla Warfare, Transformation in Warfare, Influence on Campaign

EXPLANATION OF ATTACHMENTS/VIDEO:

Map and reports from Official Records

LINKS FOR FURTHER INFORMATION:

N/A

COUNTY:

Jefferson

DATE:

1/21/1864

GEO COORDINATES:

36.0631° N,
83.6860° W

PRESERVATION

OPPORTUNITY INDEX:

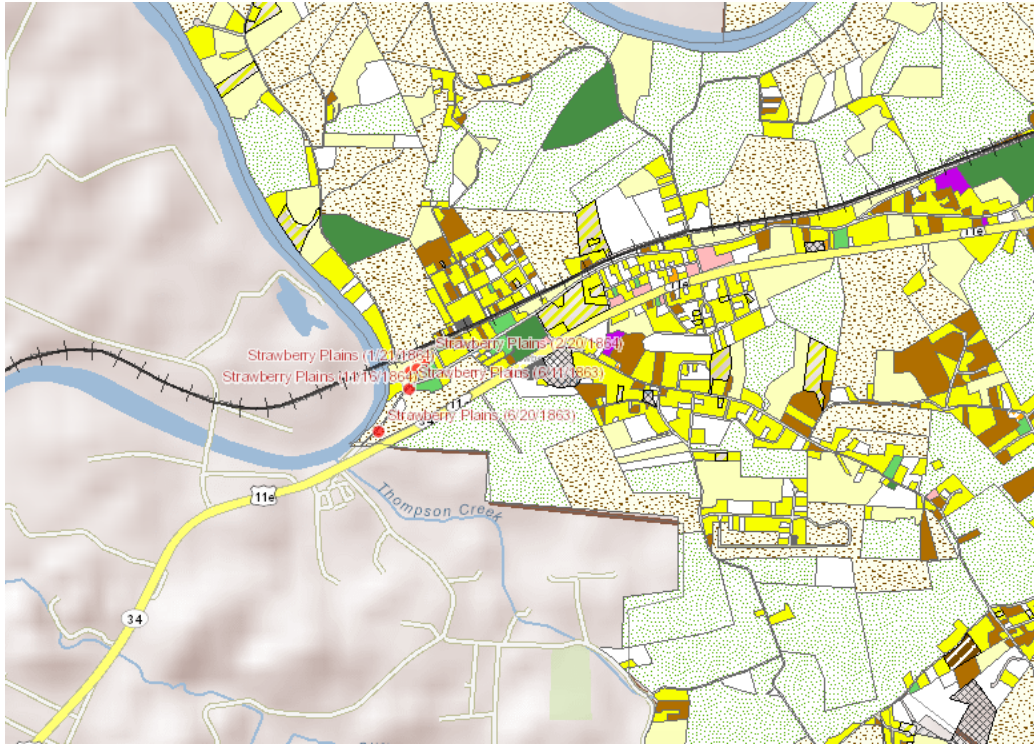
HIGH

CONFEDERATE UNITS:

N/A

UNION UNITS:

25th Brigade Army of
the Ohio (Brig. Gen.
James Spears)



January 20, 1864 - Federal scout, Strawberry Plains to north side of the Holston
No circumstantial reports filed.

STRAWBERRY PLAINS, January 20, 1864.

Brig.-Gen. POTTER:

Gen. Spears reports that his scouts and officers sent out cannot find any enemy on the north side of the Holston, and from information regarded as reliable, though indirect, there are none of the enemy save barefooted and sick at New Market and Morristown. All reported to have passed toward and crossed the French Broad. The direction taken after crossing is not known.

J. G. PARKE, Maj.-Gen.

OR, Ser. I, Vol. 32, pt. III, p. 152.

HDQRS. TWENTY-THIRD ARMY CORPS,

Near Armstrong's, January 21, 1864—8 p. m.

Brig. Gen. E. E. POTTER, Chief of Staff:

Since writing my former dispatch Gen. Spears has come into camp on my left, having come down from Bryce's Mill by a road parallel to the main Rutledge road. He reports a force of the enemy at Blain's Cross-Roads this morning,

which crossed the Holston a little above Strawberry Plains last night. Says they were both cavalry and infantry, and formed a skirmish line near a mile long. He regards his information as reliable. I send this to you, as Gen. Parke is in telegraphic communication with you, as I suppose, and the information can reach him quicker through you, though I suppose he has it from other sources already.

Very respectfully, &c.,

J. D. COX, Brig.-Gen., Cmdg.

OR, Ser. I, Vol. 32, pt. II, p. 164.

LEGEND OF TERMS:

Historical themes: Topics and subject matter that characterize the battlefield including Control of Tennessee's Resources, Crucible for Leadership, Guerilla Warfare, Transformation in Warfare, Enslaved People, and Influence on Campaign. Sites are identified that exhibit themes at moderate to high levels, and some sites may contain one or more Historical Themes.

Preservation Opportunity Index (POI): A rating assigned for each battlefield to indicate relative opportunity and potential for successful site preservation. The Index is generated by a model that evaluates ratings assigned for site significance, condition, risk of loss, protection potential, and opportunities for interpretation. Based upon the POI values for each region in Tennessee (West, Middle, East), sites are indicated as having High, Medium, or Low opportunity.

Geo Coordinates: General/central location of the battlefield area per latitude and longitude coordinates utilized in Google Earth

DO YOU HAVE INFORMATION ON A BATTLE SITE?

Please email us at info@tcwpa.org and we will reach out to you soon. If you have copies of documents or photos to share, you can include those. If you want to discuss by phone, we will schedule that too.

HELP US COLLECT INFORMATION TO PRESERVE THESE BATTLEFIELDS

TCWPA's Statewide Preservation Plan team captains are recruiting volunteers to help gather information about many of the lesser-known sites with hopes of verifying the condition of each site and identifying opportunities for preservation and interpretation.

If you are interested in helping, please contact TCWPA at info@tcwpa.org.

TCWPA will not publish nor release any confidential information, or the name of the contributor, unless you request to be recognized.

Thank you!

The logo for the Tennessee Civil War Preservation Association (TCWPA) is displayed in a light blue, lowercase, sans-serif font. The background of the entire page is a dark, blue-tinted photograph of a Civil War-era cannon with large wooden spoked wheels.

Have Information on a Civil
War Battlesite?

Contact our team at info@tcwpa.org