

Mulberry Gap

**tennessee
civil war
preservation
association**

NARRATIVE

On November 19, 1863 a scouting party of the 65th Indiana Mounted Infantry captured and controlled Mulberry Gap after it charged the camp of the 64th Virginia Cavalry killing 3, wounding 1, and capturing 1.

HISTORICAL THEMES

EXPLANATION OF ATTACHMENTS/VIDEO:

Maps and reports from Official Records

LINKS FOR FURTHER INFORMATION:

N/A

COUNTY:

Hancock

DATE:

11/19/1863

GEO COORDINATES:

36.563847° N,
83.246039° W

PRESERVATION

OPPORTUNITY INDEX:

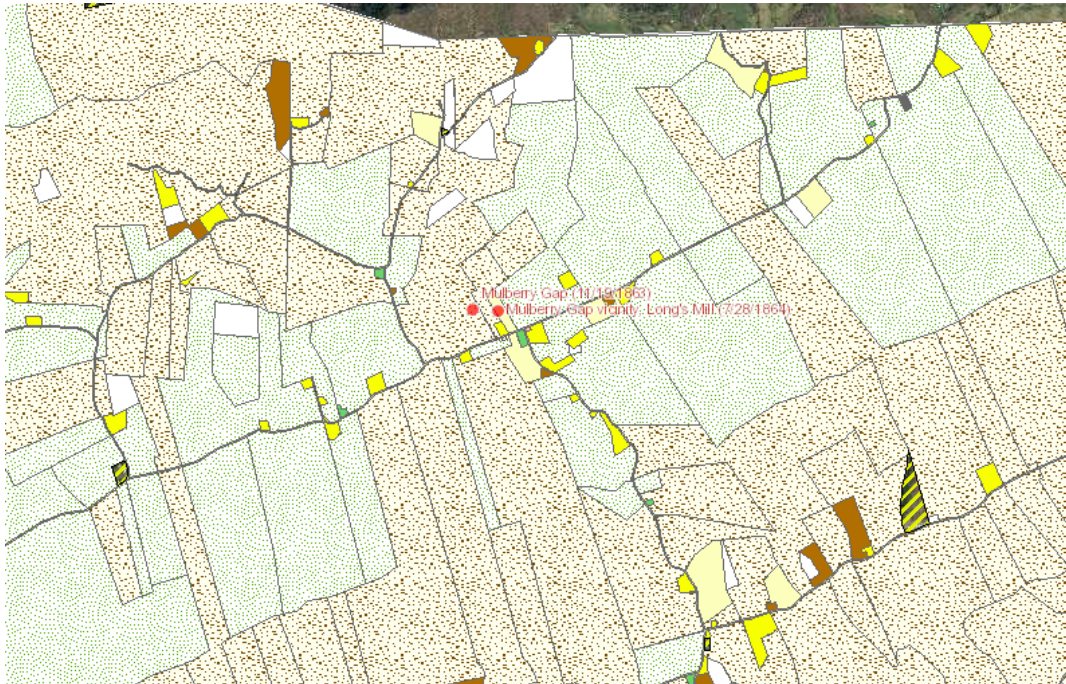
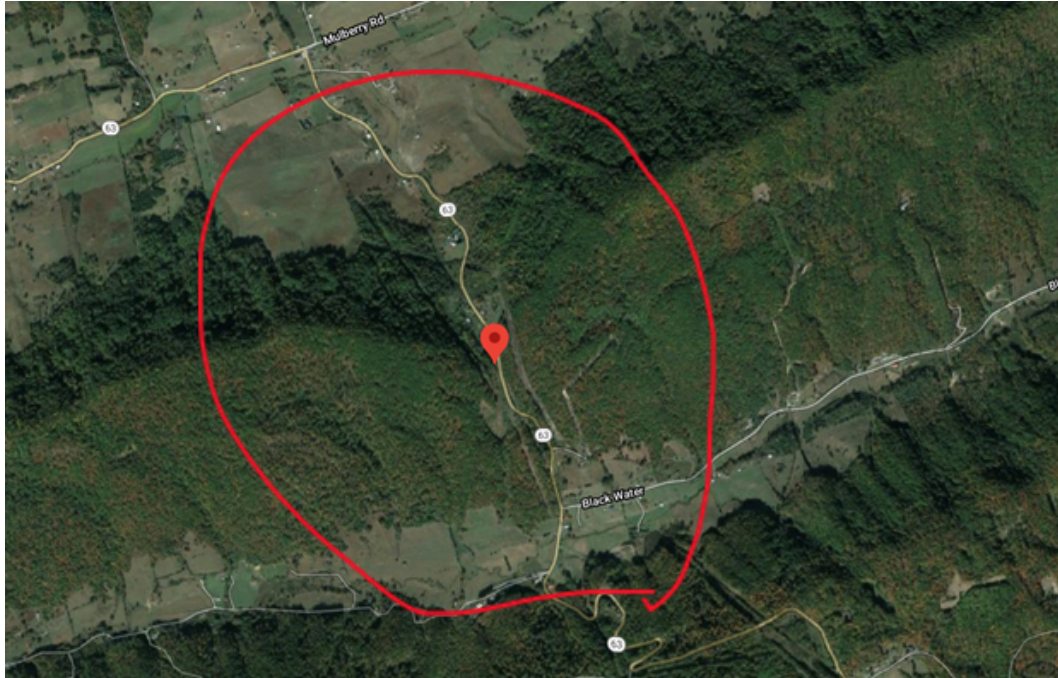
LOW

CONFEDERATE UNITS:

64th Virginia Cavalry

UNION UNITS:

65th Indiana
Mounted Infantry



November 19, 1863 - Skirmish at Mulberry Gap

NOVEMBER 19, 1863.-Skirmish at Mulberry Gap, Tenn.

Report of Brig. Gen. Orlando B. Willcox, U. S. Army.

TAZEWELL, TENN., November 20, 1863.

I have the honor to report everything comes through in good order. The rebel

force that was at Kingsport seems to have been concentrating several days toward Cumberland Gap. At Mulberry Gap and Sneedville it is reported that a considerable force was crossing Clinch River at Walker's Ford to-day, 7 miles above Sneedville. That is probably the force that moved down toward Rogersville. A small scouting party, under command of Capt. Hammond, Sixty-fifth Indiana, mounted, charged through the camp of a rebel regiment (Sixty-fourth Virginia), and scattered it at Mulberry Gap last night, killing 3, wounding 1, capturing 1 prisoner, some horses, and arms. We now hold Mulberry Gap, with small force. There are two rebel regiments at Sneedville. I expect to move to Cumberland Gap to-morrow.

O. B. WILLCOX, Brig.-Gen.

OR, Ser. I, Vol. 31, pt. I, pp. 570-571.

LEGEND OF TERMS:

Historical themes: Topics and subject matter that characterize the battlefield including Control of Tennessee's Resources, Crucible for Leadership, Guerilla Warfare, Transformation in Warfare, Enslaved People, and Influence on Campaign. Sites are identified that exhibit themes at moderate to high levels, and some sites may contain one or more Historical Themes.

Preservation Opportunity Index (POI): A rating assigned for each battlefield to indicate relative opportunity and potential for successful site preservation. The Index is generated by a model that evaluates ratings assigned for site significance, condition, risk of loss, protection potential, and opportunities for interpretation. Based upon the POI values for each region in Tennessee (West, Middle, East), sites are indicated as having High, Medium, or Low opportunity.

Geo Coordinates: General/central location of the battlefield area per latitude and longitude coordinates utilized in Google Earth

DO YOU HAVE INFORMATION ON A BATTLE SITE?

Please email us at info@tcwpa.org and we will reach out to you soon. If you have copies of documents or photos to share, you can include those. If you want to discuss by phone, we will schedule that too.

HELP US COLLECT INFORMATION TO PRESERVE THESE BATTLEFIELDS

TCWPA's Statewide Preservation Plan team captains are recruiting volunteers to help gather information about many of the lesser-known sites with hopes of verifying the condition of each site and identifying opportunities for preservation and interpretation.

If you are interested in helping, please contact TCWPA at info@tcwpa.org.

TCWPA will not publish nor release any confidential information, or the name of the contributor, unless you request to be recognized.

Thank you!

The logo for the Tennessee Civil War Preservation Association (TCWPA) is displayed in a light blue, lowercase, sans-serif font. It is positioned in the lower-left corner of a dark blue banner that features a background image of a Civil War-era cannon.

tcwpa

Have Information on a Civil
War Battlesite?

Contact our team at info@tcwpa.org