

MOSCOW

**tennessee
civil war
preservation
association**

NARRATIVE

On February 18, 1862 a Union wagon train escorted by the 3rd Iowa, 41st and 53rd Illinois, and 33rd Wisconsin Infantry regiments was attacked by Confederate cavalry commanded by Col. R.V. Richardson. The engagement lasted about five minutes when the Confederate attack was repulsed. Union losses were 1 man wounded and 16 missing. The wagon train also lost 42 mules and 2 horses.

HISTORICAL THEMES

EXPLANATION OF ATTACHMENTS/VIDEO:

Map and report from Official Records

LINKS FOR FURTHER INFORMATION:

N/A

COUNTY:

Fayette

DATE:

2/8/1862

GEO COORDINATES:

35.0620° N,

89.4040° W

PRESERVATION

OPPORTUNITY INDEX:

LOW

CONFEDERATE UNITS:

12th Tennessee

(Richardson's)

Cavalry

UNION UNITS:

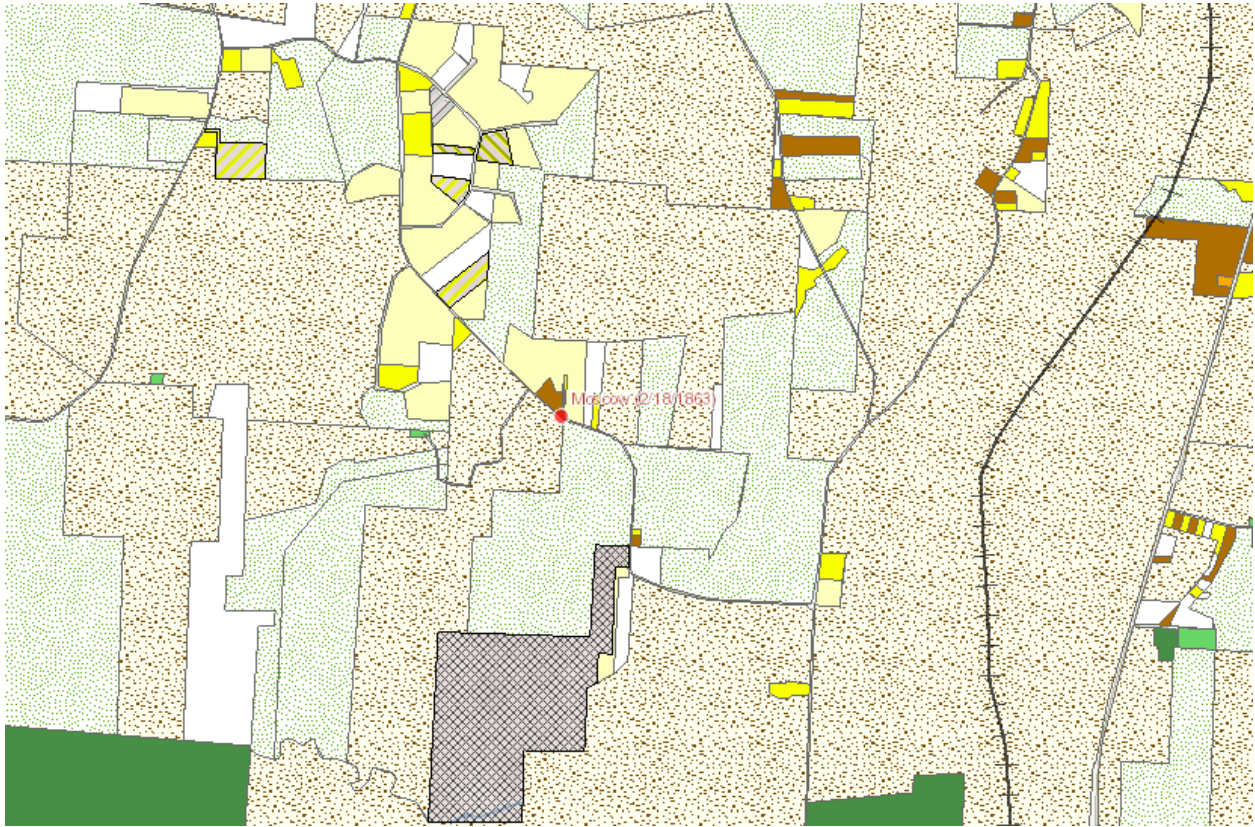
3rd Iowa Infantry

41st Illinois Infantry

53rd Illinois Infantry

33rd Wisconsin

Infantry



FEBRUARY 18, 1863.-Affair near Moscow, Tenn.

Report of Maj. Francis M. Long, Forty-first Illinois Infantry.

HDQRS. FORTY-FIRST REGT. ILLINOIS VOLUNTEERS, Moscow, Tenn.,

February 22, 1863.

SIR: On the morning of the 18th instant, I was detailed to take command of 160 men, comprised of details from the Third Iowa, Forty-first and Fifty-third Illinois, and Thirty-third Wisconsin, to escort a forage train that was going out after forage.

I reported at division headquarters at 8 a. m., and took command of the aforesaid guards, who had reported there. We started out in a northwest direction. After going 5 1/2 or 6 miles, we stopped at the plantation of Col. Nuckles and loaded our train.

While we were loading the train, I received information that 150 of [R. V.] Richardson's rebel cavalry had made their appearance about a mile west of us, and that they were moving in a southeast direction. I immediately ordered the guards in line, ready for action. When our train was loaded, I placed half the guards in front and the remainder in the rear of the train. I took all necessary precautions to have the train move in good order, and we started for camp,

moving unmolested until within 2 1/2 or 3 miles of camp, when I discovered a body of rebel cavalry south of the road, about 150 strong, preparing to make a dash upon the train. I sent orders to the front guards to return with all possible speed, at the same time hurrying forward with the rear guards. In consequence of the bad condition of the roads, the train was somewhat scattered, and both the front and rear guards were from a half to three-fourths of a mile from the center of the train.

In the meantime the rebels had made their dash and attacked the train in the center; the front and rear guards coming up, engaged the enemy at the same time. The engagement lasted about five minutes, when the enemy were repulsed and in full retreat.

Our loss was 1 man wounded and 16 missing. We also lost 42 mules and 2 horses. Loss of the enemy unknown.

I have the honor to be, sir, your obedient servant,
F. M. LONG, Maj. Forty-first Regt. Illinois Volunteers.
OR, Ser. I, Vol. 24, pt. I, p. 360.

LEGEND OF TERMS:

Historical themes: Topics and subject matter that characterize the battlefield including Control of Tennessee's Resources, Crucible for Leadership, Guerilla Warfare, Transformation in Warfare, Enslaved People, and Influence on Campaign. Sites are identified that exhibit themes at moderate to high levels, and some sites may contain one or more Historical Themes.

Preservation Opportunity Index (POI): A rating assigned for each battlefield to indicate relative opportunity and potential for successful site preservation. The Index is generated by a model that evaluates ratings assigned for site significance, condition, risk of loss, protection potential, and opportunities for interpretation. Based upon the POI values for each region in Tennessee (West, Middle, East), sites are indicated as having High, Medium, or Low opportunity.

Geo Coordinates: General/central location of the battlefield area per latitude and longitude coordinates utilized in Google Earth

DO YOU HAVE INFORMATION ON A BATTLE SITE?

Please email us at info@tcwpa.org and we will reach out to you soon. If you have copies of documents or photos to share, you can include those. If you want to discuss by phone, we will schedule that too.

HELP US COLLECT INFORMATION TO PRESERVE THESE BATTLEFIELDS

TCWPA's Statewide Preservation Plan team captains are recruiting volunteers to help gather information about many of the lesser-known sites with hopes of verifying the condition of each site and identifying opportunities for preservation and interpretation.

If you are interested in helping, please contact TCWPA at info@tcwpa.org.

TCWPA will not publish nor release any confidential information, or the name of the contributor, unless you request to be recognized.

Thank you!

The logo for the Tennessee Civil War Preservation Association (TCWPA) is displayed in a light blue, lowercase, sans-serif font. It is positioned on the left side of a dark blue banner that features a background image of a Civil War-era cannon. The banner also contains contact information on the right side.

tcwpa

Have Information on a Civil
War Battlesite?

Contact our team at info@tcwpa.org