

Nashville-Silver Springs

**tennessee
civil war
preservation
association**

NARRATIVE

According to the only report mentioning action in this area, Col. John Hunt Morgan's Confederate cavalry engaged Union forces south of Silver Springs and to the east of that location between Silver Springs and Lebanon. The engagements resulted in the capture of at least 162 Union prisoners including 19 from the Fourth Michigan Cavalry.

COUNTY:

Davidson

DATE:

11/12/1862

GEO COORDINATES:

36.1627° N,
86.7816° W

HISTORICAL THEMES

PRESERVATION

OPPORTUNITY INDEX:

LOW

EXPLANATION OF ATTACHMENTS/VIDEO:

Maps and reports from Official Records

CONFEDERATE UNITS:

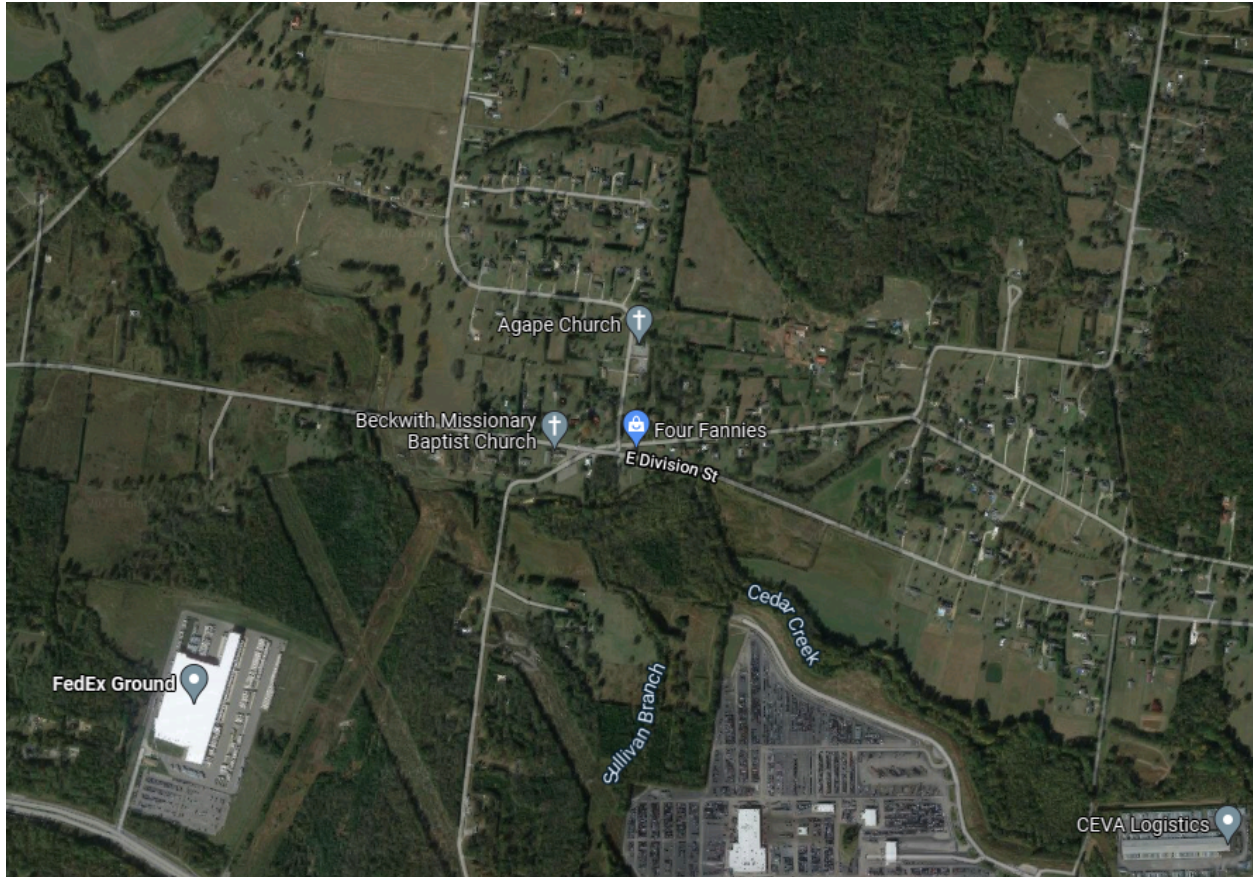
Col. John Hunt
Morgan's Cavalry

LINKS FOR FURTHER INFORMATION:

N/A

UNION UNITS:

4th Michigan Cavalry



HDQRS., November 13, 1862.

Maj.-Gen. BRECKINRIDGE:

GEN.: The force at Silver Springs is increasing. The enemy crossed another small division at Park House Ferry on a pontoon bridge this morning. They also have a cavalry force of about 800 at Hartsville. I will therefore fall back in the morning to Stone's River. I sent five companies last night under Lieut.-Col. Hutcheson to the pike below Silver Springs for the purpose of catching their foraging wagons. He returned this afternoon with a lieutenant and nineteen men belonging to the Fourth Michigan Cavalry. Col. Duke also went in pursuit of a body of cavalry that were approaching Lebanon and succeeded in chasing them back to within two miles of Silver Springs. I paroled this afternoon 162 prisoners, including those which were sent to Murfreesborough and returned. I sent Maj. Breckinridge this afternoon to attack a force of about 300 who were approaching from the direction of Hartsville, but have received no information from him. My headquarters will be at Stone's River, but one regiment will remain at Lebanon until the last possible moment.

Very respectfully,
JNO. H. MORGAN, Col., Cmdg. Brigade.

OR, Ser. I, Vol. 52, pt. II, pp. 388-389

LEGEND OF TERMS:

Historical themes: Topics and subject matter that characterize the battlefield including Control of Tennessee's Resources, Crucible for Leadership, Guerilla Warfare, Transformation in Warfare, Enslaved People, and Influence on Campaign. Sites are identified that exhibit themes at moderate to high levels, and some sites may contain one or more Historical Themes.

Preservation Opportunity Index (POI): A rating assigned for each battlefield to indicate relative opportunity and potential for successful site preservation. The Index is generated by a model that evaluates ratings assigned for site significance, condition, risk of loss, protection potential, and opportunities for interpretation. Based upon the POI values for each region in Tennessee (West, Middle, East), sites are indicated as having High, Medium, or Low opportunity.

Geo Coordinates: General/central location of the battlefield area per latitude and longitude coordinates utilized in Google Earth

DO YOU HAVE INFORMATION ON A BATTLE SITE?

Please email us at info@tcwpa.org and we will reach out to you soon. If you have copies of documents or photos to share, you can include those. If you want to discuss by phone, we will schedule that too.

HELP US COLLECT INFORMATION TO PRESERVE THESE BATTLEFIELDS

TCWPA's Statewide Preservation Plan team captains are recruiting volunteers to help gather information about many of the lesser-known sites with hopes of verifying the condition of each site and identifying opportunities for preservation and interpretation.


If you are interested in helping, please contact TCWPA at info@tcwpa.org .

TCWPA will not publish nor release any confidential information, or the name of the contributor, unless you request to be recognized.

Thank you!



tcwpa



Have Information on a Civil
War Battlesite?

Contact our team at info@tcwpa.org