

La Vergne III

NARRATIVE

On December 30, 1862 Confederate cavalry attacked Union camps along the Lebanon Pike and Old Jefferson.

HISTORICAL THEMES

EXPLANATION OF ATTACHMENTS/VIDEO:

Map and reports from Official Records

LINKS FOR FURTHER INFORMATION:

N/A

COUNTY:

Rutherford

DATE:

12/30/1862

GEO COORDINATES:

36.0156° N,
86.5819° W

PRESERVATION

OPPORTUNITY INDEX:

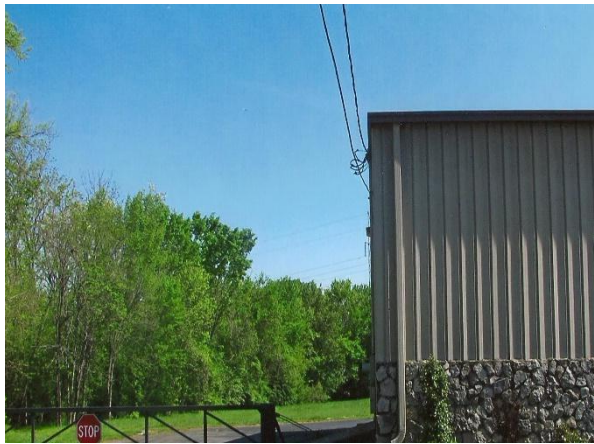
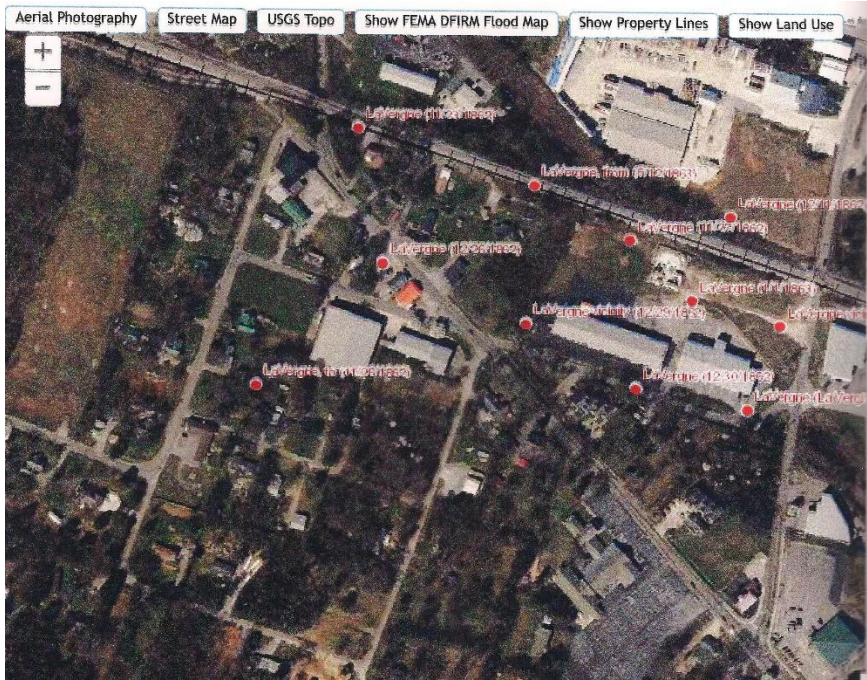
LOW

CONFEDERATE UNITS:

Maj. Gen. Joseph
Wheeler's Cavalry
Wiggins Arkansas
Battery of artillery

UNION UNITS:

N/A



View from the North



View from the South



View from the East



View from the West

December 30, 1862 - Skirmish at La Vergne – Note 1

Report of Capt. J.H. Wiggins, Arkansas battery, including skirmishes at La Vergne

December 26-27

FEBRUARY 10, 1863

In compliance with General Orders, No. 6, I have the honor to submit the following report of the part borne by Wiggins' battery in the fights before Murfreesborough. In compliance with orders from Gen. Wheeler, took Lieut. Calloway with a section of guns and moved with the command on the Lebanon pike and north Old Jefferson, where a camp of the enemy was attacked [30th], and the battery fired about a dozen; then moved on with the command by way of La Vergne and Nolensville, but had no other engagement until Wednesday [31st] evening, when the enemy was

attacked and the battery engaged two hours. Lost 1 man wounded, 1 horse killed, and several horses wounded.

The officers and men all bore themselves well and with coolness, Sergt. A. A. Blake especially displayed much gallantry.

Respectfully submitted.

J. H. WIGGINS, Capt.

OR, Ser. I, Vol. 20, pt. 1, pp. 965-966.

Note 1: At times verification for an event is found incidentally in reports covering larger time frames and other actions. This is the case with the skirmish at La Vergne, December 30, 1862.

LEGEND OF TERMS:

Historical themes: Topics and subject matter that characterize the battlefield including Control of Tennessee's Resources, Crucible for Leadership, Guerilla Warfare, Transformation in Warfare, Enslaved People, and Influence on Campaign. Sites are identified that exhibit themes at moderate to high levels, and some sites may contain one or more Historical Themes.

Preservation Opportunity Index (POI): A rating assigned for each battlefield to indicate relative opportunity and potential for successful site preservation. The Index is generated by a model that evaluates ratings assigned for site significance, condition, risk of loss, protection potential, and opportunities for interpretation. Based upon the POI values for each region in Tennessee (West, Middle, East), sites are indicated as having High, Medium, or Low opportunity.

Geo Coordinates: General/central location of the battlefield area per latitude and longitude coordinates utilized in Google Earth

DO YOU HAVE INFORMATION ON A BATTLE SITE?

Please email us at info@tcwpa.org and we will reach out to you soon. If you have copies of documents or photos to share, you can include those. If you want to discuss by phone, we will schedule that too.

HELP US COLLECT INFORMATION TO PRESERVE THESE BATTLEFIELDS

TCWPA's Statewide Preservation Plan team captains are recruiting volunteers to help gather information about many of the lesser-known sites with hopes of verifying the condition of each site and identifying opportunities for preservation and interpretation.

If you are interested in helping, please contact TCWPA at info@tcwpa.org.

TCWPA will not publish nor release any confidential information, or the name of the contributor, unless you request to be recognized.

Thank you!

The logo for the Tennessee Civil War Preservation Association (TCWPA) is displayed in a light blue, lowercase, sans-serif font. It is positioned on the left side of a dark blue banner that features a background image of a Civil War-era cannon. The banner also contains contact information on the right side.

tcwpa

Have Information on a Civil
War Battlesite?

Contact our team at info@tcwpa.org