

# La Vergne II

## **NARRATIVE**

On December 26, 1862 Union forces attacked the Confederate position near La Vergne. After skirmishes that followed the next two days, Confederate forces fell back to their lines outside Murfreesboro.

## **HISTORICAL THEMES**

Influence on Campaign

## **EXPLANATION OF ATTACHMENTS/VIDEO:**

Map and reports for Official Records

## **LINKS FOR FURTHER INFORMATION:**

N/A

## **COUNTY:**

Davidson

## **DATE:**

12/26/1862

## **GEO COORDINATES:**

36.0156° N,  
86.5819° W

## **PRESERVATION**

### **OPPORTUNITY INDEX:**

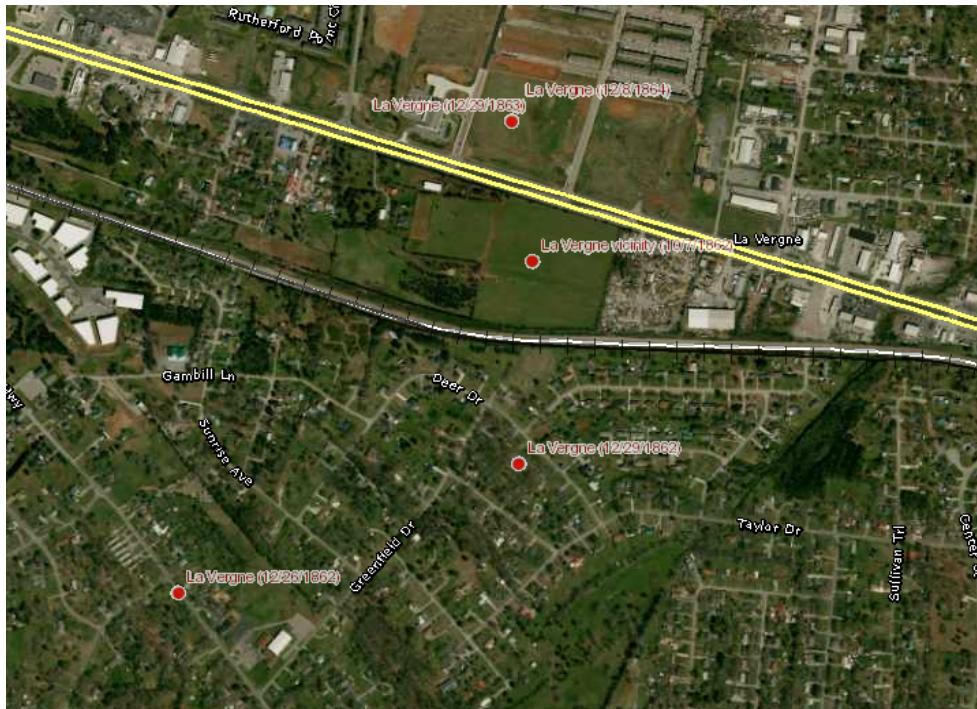
LOW

## **CONFEDERATE UNITS:**

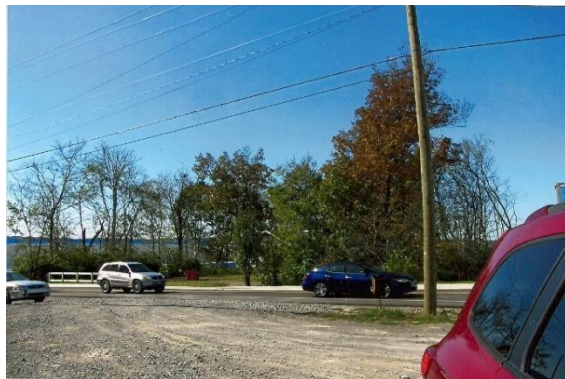
Maj. Gen. Joseph  
Wheeler's Cavalry  
Wiggins Arkansas  
Battery of artillery

## **UNION UNITS:**

N/A



View of site from the North



View of site from the South



View of site from the East



View of site from the West

December 30, 1862 - Skirmish at La Vergne – Note 1

Report of Capt. J.H. Wiggins, Arkansas battery, including skirmishes at La Vergne  
December 26-27

FEBRUARY 10, 1863

In compliance with General Orders, No. 6, I have the honor to submit the following report of the part borne by Wiggins' battery in the fights before Murfreesborough.

On the evening of December 26, [1862] the enemy advanced upon La Vergne, and one section of the battery was advanced, under Lieut. [J. W.] Calloway, to engage the enemy. During the engagement that evening we lost 3 horses and had 2 men wounded. That night the section under Lieut. Calloway retired about a mile, and one section under Lieut. [J. P.] Bryant, was left in La Vergne on picket.

On the morning of the 27<sup>th</sup>, Lieut. Calloway, with his section, was ordered to the front to engage the enemy again, while Lieut. Bryant, with his section, was posted on a hill to the left of the pike and in rear of La Vergne, to relieve the retreat of Lieut. Calloway. The battery retired to Stewart's Creek until Monday morning, the rest of the battery retiring to the rear.

On Monday, the 29<sup>th</sup>, we retired to our lines In front of Murgreesborough, firing in the same manner as at Stewart's Creek, and moved with the command to the right and encamped until midnight [the 29<sup>th</sup>], when, in compliance with orders from Gen. Wheeler, took Lieut. Calloway With a section of guns and moved with the command on the Lebanon pike and north Old Jefferson, where a camp of the enemy was attacked [30<sup>th</sup>], and the battery fired about a dozen; then moved on with the command by way of La Vergne and Nolensville, but had no other engagement until Wednesday [31<sup>st</sup>] evening, when the enemy was attacked and the battery engaged two hours. Lost 1 man wounded, 1 horse killed, and several horses wounded. On Wednesday [31<sup>st</sup>], one piece of the section which was left behind was taken out by Lieut. Bryant, by order of Gen. Bragg, with Gen Breckinridge's division, and was engaged in the action that day. Total loss, 3 men wounded, 4 horses killed, and several more wounded. The stock was very much exhausted, not having been unharnessed in six days.

The officers and men all bore themselves well and with coolness, Sergt. A. A. Blake especially displayed much gallantry.

Respectfully submitted.

J. H. WIGGINS, Capt.

OR, Ser. I, Vol. 20, pt. 1, pp. 965-966.

Note 1: At times verification for an event is found incidentally in reports covering larger time frames and other actions. This is the case with the skirmish at La Vergne, December 30, 1862.

## LEGEND OF TERMS:

Historical themes: Topics and subject matter that characterize the battlefield including Control of Tennessee's Resources, Crucible for Leadership, Guerilla Warfare, Transformation in Warfare, Enslaved People, and Influence on Campaign. Sites are identified that exhibit themes at moderate to high levels, and some sites may contain one or more Historical Themes.

Preservation Opportunity Index (POI): A rating assigned for each battlefield to indicate relative opportunity and potential for successful site preservation. The Index is generated by a model that evaluates ratings assigned for site significance, condition, risk of loss, protection potential, and opportunities for interpretation. Based upon the POI values for each region in Tennessee (West, Middle, East), sites are indicated as having High, Medium, or Low opportunity.

Geo Coordinates: General/central location of the battlefield area per latitude and longitude coordinates utilized in Google Earth

## DO YOU HAVE INFORMATION ON A BATTLE SITE?

Please email us at [info@tcwpa.org](mailto:info@tcwpa.org) and we will reach out to you soon. If you have copies of documents or photos to share, you can include those. If you want to discuss by phone, we will schedule that too.

## HELP US COLLECT INFORMATION TO PRESERVE THESE BATTLEFIELDS

TCWPA's Statewide Preservation Plan team captains are recruiting volunteers to help gather information about many of the lesser-known sites with hopes of verifying the condition of each site and identifying opportunities for preservation and interpretation.

If you are interested in helping, please contact TCWPA at [info@tcwpa.org](mailto:info@tcwpa.org).

TCWPA will not publish nor release any confidential information, or the name of the contributor, unless you request to be recognized.

Thank you!

The logo for the Tennessee Civil War Preservation Association (TCWPA) is displayed in a light blue, lowercase, sans-serif font. It is positioned in the lower-left corner of a dark blue banner that features a background image of a Civil War-era cannon.

tcwpa

Have Information on a Civil  
War Battlesite?

Contact our team at [info@tcwpa.org](mailto:info@tcwpa.org)