

# La Vergne I

## **NARRATIVE**

On October 6, 1862 Union forces under Brig. Gen. John Palmer and Col. John F. Miller engaged Confederate cavalry commanded by Brig. Gen. Nathan Forrest along the Murfreesboro turnpike. In the skirmish that followed the Union cavalry captured 175 prisoners, pieces of artillery and quartermaster supplies.

## **HISTORICAL THEMES**

### **EXPLANATION OF ATTACHMENTS/VIDEO:**

Map, reports from Official Records

### **LINKS FOR FURTHER INFORMATION:**

N/A

### **COUNTY:**

Rutherford

### **DATE:**

10/7/1862

### **GEO COORDINATES:**

36.0156° N,  
86.5819° W

### **PRESERVATION**

#### **OPPORTUNITY INDEX:**

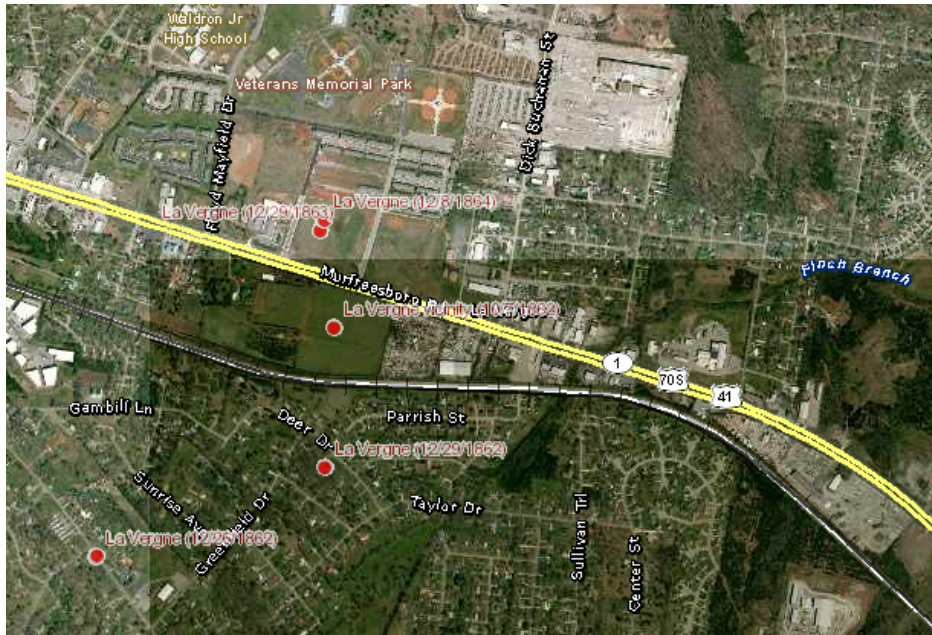
LOW

### **CONFEDERATE UNITS:**

32<sup>nd</sup> Alabama  
Infantry

### **UNION UNITS:**

N/A



Site looking north



Site looking south



Site looking east



Site looking west

#### GEN. NEGLEY'S OFFICIAL REPORT.

HEADQUARTERS UNITED STATES FORCES,  
NASHVILLE, Tenn., Oct. 9, 1862.

SIR: Maj.-Gen. J.R. ANDERSON, Brig.-Gen. FORREST, and Gov. HARRIS have been rapidly concentrating a large rebel force at Lavergne, fifteen miles east, with the avowed intention of assaulting Nashville. Deeming it a favorable opportunity to check this project by a sudden blow, a concerted movement was made on the night of the 6th inst.

A force of four hundred infantry, four hundred cavalry, and four pieces of artillery, under command of Gen. PALMER, was sent via the Murfreesboro road, at the same time eighteen hundred infantry, under Col. MILLER, marched by a circuitous route to the south of Lavergne. The enemy's pickets and vedettes were in considerable force on the roads, and skirmished with our advance for ten miles, enabling the main force, consisting of one regiment, the Thirty-second Alabama Infantry, one

steel-rifled cannon, and three thousand cavalry, to assume a position, forming their lines in anticipation of our entire force advancing on the Murfreesboro road, which was part of our object.

The enemy commenced the action by opening fire with three pieces of artillery at the distance of three hundred yards. This was soon silenced by a shell from one of our guns exploding their ammunition chest. At the moment the enemy were directing their movements against the right flank of Gen. PALMER's force, Col. MILLER's infantry arrived, advancing in a splendid line of battle, and delivering a well-directed fire into the enemy's ranks, which was followed by a skillful deployment right and left, to cut off their retreat.

The Confederates held their ground for thirty minutes, then fled in the wildest disorder, leaving one hundred and seventy-five prisoners in our hands, among whom were two Lieutenant-Colonels and a number of line officers, three pieces of artillery, ordnance and Quartermaster stores, a large amount of provisions, camp equipage, personal effects, stand of regimental colors, and two railroad cars, which we destroyed. Their defeat was complete. Their loss in killed and wounded was about eighty.

The conduct of our officers and men was highly meritorious, with numerous instances of individual bravery and efficiency.

A report in detail will be forwarded to you the first opportunity.

Our loss was five killed, nine wounded and four missing.

## LEGEND OF TERMS:

Historical themes: Topics and subject matter that characterize the battlefield including Control of Tennessee's Resources, Crucible for Leadership, Guerilla Warfare, Transformation in Warfare, Enslaved People, and Influence on Campaign. Sites are identified that exhibit themes at moderate to high levels, and some sites may contain one or more Historical Themes.

Preservation Opportunity Index (POI): A rating assigned for each battlefield to indicate relative opportunity and potential for successful site preservation. The Index is generated by a model that evaluates ratings assigned for site significance, condition, risk of loss, protection potential, and opportunities for interpretation. Based upon the POI values for each region in Tennessee (West, Middle, East), sites are indicated as having High, Medium, or Low opportunity.

Geo Coordinates: General/central location of the battlefield area per latitude and longitude coordinates utilized in Google Earth

## DO YOU HAVE INFORMATION ON A BATTLE SITE?

Please email us at [info@tcwpa.org](mailto:info@tcwpa.org) and we will reach out to you soon. If you have copies of documents or photos to share, you can include those. If you want to discuss by phone, we will schedule that too.

## HELP US COLLECT INFORMATION TO PRESERVE THESE BATTLEFIELDS

TCWPA's Statewide Preservation Plan team captains are recruiting volunteers to help gather information about many of the lesser-known sites with hopes of verifying the condition of each site and identifying opportunities for preservation and interpretation.

If you are interested in helping, please contact TCWPA at [info@tcwpa.org](mailto:info@tcwpa.org).

TCWPA will not publish nor release any confidential information, or the name of the contributor, unless you request to be recognized.

Thank you!



tcwpa



Have Information on a Civil War Battlesite?

Contact our team at [info@tcwpa.org](mailto:info@tcwpa.org)