

Franklin-Stones River Campaign

**tennessee
civil war
preservation
association**

NARRATIVE

On December 26, 1862 Colonel Lewis Zahm's Union cavalry brigade attacked a small Confederate cavalry force led by Colonel Baxter Smith. Zahm's goal was to clear out Franklin and protect the right flank of the Union army's march from Nashville to Murfreesboro. Zahm made initial contact with Confederate pickets at 3 p.m. around two miles from Franklin forcing Smith's men back to town. The major fighting appears to have occurred about ½ miles north of town at the Harpeth River crossing and in town. Zahm captured the town and pursued Smith's men for about two miles. Union forces left Franklin that night, and it was reoccupied by Confederates by the next day.

HISTORICAL THEMES

EXPLANATION OF ATTACHMENTS/VIDEO:

Map and photo of battlefield site/features

LINKS FOR FURTHER INFORMATION:

N/A

COUNTY:

Williamson

DATE:

12/26/1862

GEO COORDINATES:

35.9251° N,
86.8689° W

PRESERVATION

OPPORTUNITY INDEX:

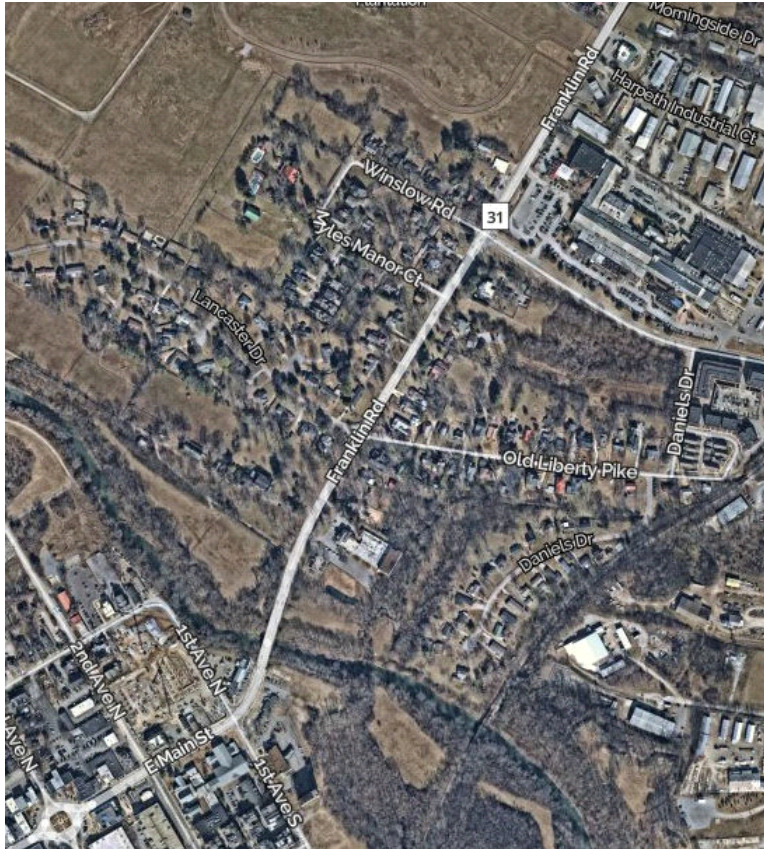
LOW

CONFEDERATE UNITS:

8th Tennessee
Cavalry (Col. Baxter
Smith)

UNION UNITS:

Brig. Gen. Lewis
Zahm
1st, 3rd, and 4th Ohio
Cavalry



Approximate location of main battle site



Civil War era bridge (right) with current bridge in the background

LEGEND OF TERMS:

Historical themes: Topics and subject matter that characterize the battlefield including Control of Tennessee's Resources, Crucible for Leadership, Guerilla Warfare, Transformation in Warfare, Enslaved People, and Influence on Campaign. Sites are identified that exhibit themes at moderate to high levels, and some sites may contain one or more Historical Themes.

Preservation Opportunity Index (POI): A rating assigned for each battlefield to indicate relative opportunity and potential for successful site preservation. The Index is generated by a model that evaluates ratings assigned for site significance, condition, risk of loss, protection potential, and opportunities for interpretation. Based upon the POI values for each region in Tennessee (West, Middle, East), sites are indicated as having High, Medium, or Low opportunity.

Geo Coordinates: General/central location of the battlefield area per latitude and longitude coordinates utilized in Google Earth

DO YOU HAVE INFORMATION ON A BATTLE SITE?

Please email us at info@tcwpa.org and we will reach out to you soon. If you have copies of documents or photos to share, you can include those. If you want to discuss by phone, we will schedule that too.

HELP US COLLECT INFORMATION TO PRESERVE THESE BATTLEFIELDS

TCWPA's Statewide Preservation Plan team captains are recruiting volunteers to help gather information about many of the lesser-known sites with hopes of verifying the condition of each site and identifying opportunities for preservation and interpretation.

If you are interested in helping, please contact TCWPA at info@tcwpa.org .

TCWPA will not publish nor release any confidential information, or the name of the contributor, unless you request to be recognized.

Thank you!



tcwpa

Have Information on a Civil
War Battlesite?
Contact our team at info@tcwpa.org