

# Franklin (1862)

**tennessee  
civil war  
preservation  
association**

## **NARRATIVE**

Colonel Lewis Zahm's Union cavalry brigade was ordered to move against a small Confederate cavalry force at Franklin led by Colonel Baxter Smith. Zahm's goal was to clear out Franklin and protect the right flank of the Union army's march from Nashville to Murfreesboro. Zahm made initial contact with Confederate pickets at 3 p.m. around two miles from Franklin and quickly forced Smith's men back to town. The major fighting appears to have occurred just north of town at the Harpeth River crossing and in town. Zahm captured the town and pursued Smith's men for about two miles. Union forces left Franklin that night, and it was reoccupied by Confederate forces the next day.

## **HISTORICAL THEMES**

Guerilla Warfare

## **EXPLANATION OF ATTACHMENTS/VIDEO:**

Period and current maps of battlefield

## **LINKS FOR FURTHER INFORMATION:**

N/A

## **COUNTY:**

Williamson

## **DATE:**

10/26/1862

## **GEO COORDINATES:**

35.9251° N,  
86.8689° W

## **PRESERVATION**

### **OPPORTUNITY INDEX:**

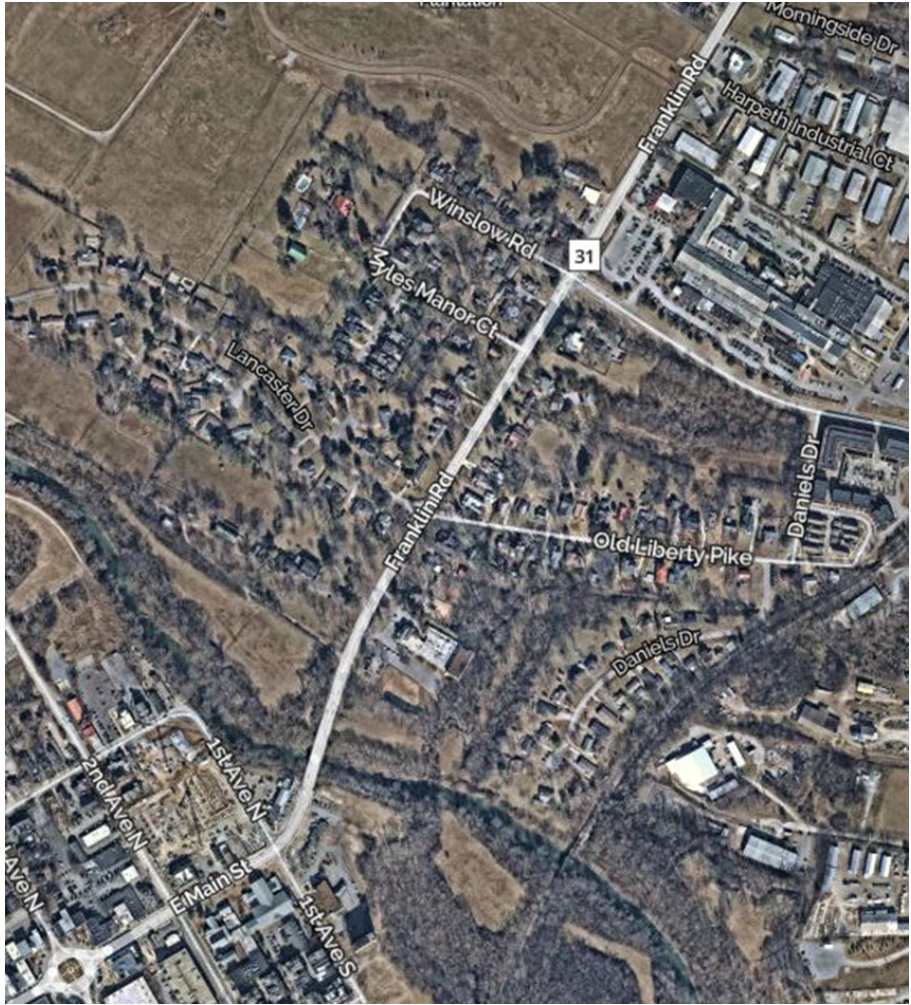
LOW

## **CONFEDERATE UNITS:**

Probably 7<sup>th</sup> TN  
Cavalry Battalion

## **UNION UNITS:**

Col. Lewis Zahm's 2<sup>nd</sup>  
Cavalry Brigade  
3<sup>rd</sup> Ohio Cavalry





## LEGEND OF TERMS:

Historical themes: Topics and subject matter that characterize the battlefield including Control of Tennessee's Resources, Crucible for Leadership, Guerilla Warfare, Transformation in Warfare, Enslaved People, and Influence on Campaign. Sites are identified that exhibit themes at moderate to high levels, and some sites may contain one or more Historical Themes.

Preservation Opportunity Index (POI): A rating assigned for each battlefield to indicate relative opportunity and potential for successful site preservation. The Index is generated by a model that evaluates ratings assigned for site significance, condition, risk of loss, protection potential, and opportunities for interpretation. Based upon the POI values for each region in Tennessee (West, Middle, East), sites are indicated as having High, Medium, or Low opportunity.

Geo Coordinates: General/central location of the battlefield area per latitude and longitude coordinates utilized in Google Earth

## DO YOU HAVE INFORMATION ON A BATTLE SITE?

Please email us at [info@tcwpa.org](mailto:info@tcwpa.org) and we will reach out to you soon. If you have copies of documents or photos to share, you can include those. If you want to discuss by phone, we will schedule that too.

## HELP US COLLECT INFORMATION TO PRESERVE THESE BATTLEFIELDS

TCWPA's Statewide Preservation Plan team captains are recruiting volunteers to help gather information about many of the lesser-known sites with hopes of verifying the condition of each site and identifying opportunities for preservation and interpretation.

If you are interested in helping, please contact TCWPA at [info@tcwpa.org](mailto:info@tcwpa.org) .

TCWPA will not publish nor release any confidential information, or the name of the contributor, unless you request to be recognized.

Thank you!

The logo for the Tennessee Civil War Preservation Association (TCWPA) is displayed in a light blue, lowercase, sans-serif font. It is positioned in the lower-left corner of a dark blue banner that features a background image of a Civil War-era cannon.

Have Information on a Civil  
War Battlesite?

Contact our team at [info@tcwpa.org](mailto:info@tcwpa.org)